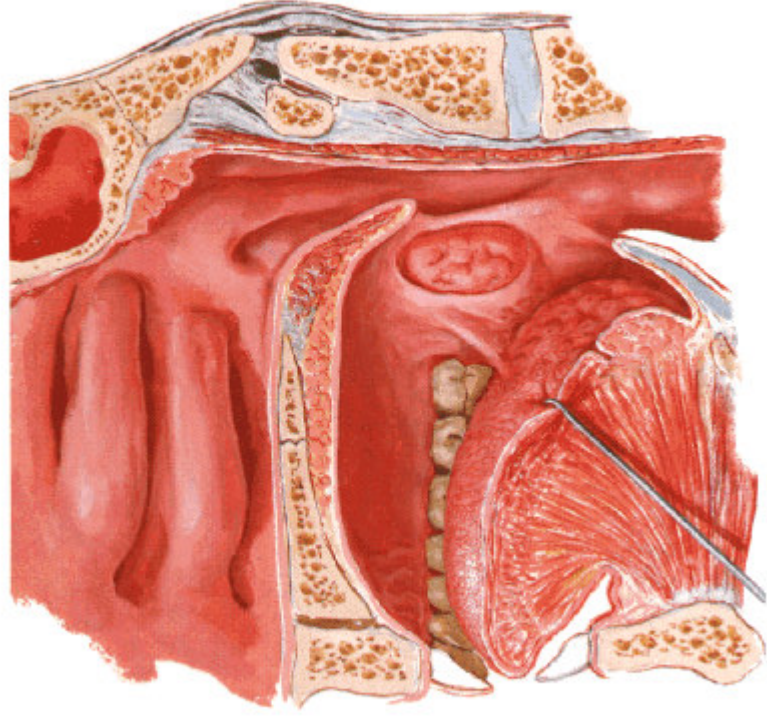


# **Carcinoma del cavo orale: dati epidemiologici**

- **4% dei tumori maligni dell'uomo**
- **12,5 nuovi casi ogni 100.000 ab./anno**
- **m/f ratio= 4:1**
- **quinta-sesta decade**
  
- **sopravvivenza media a 5 aa: 25-40%**

**Fauces**  
Medial Sagittal View

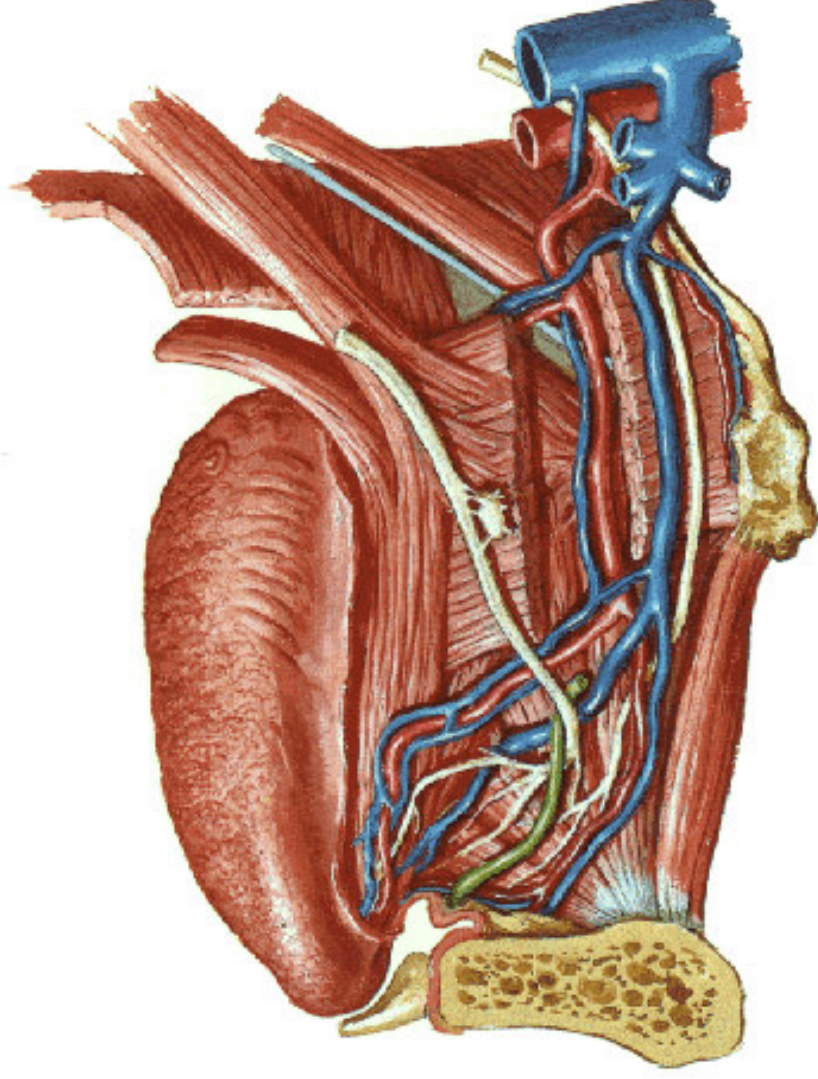


F. Netter  
M.D.  
© Novartis

# **Carcinoma del cavo orale: storia naturale**

- **sintomatologia algica precoce (lingua)**
- **infiltrazione muscolare profonda**
- **permeazione linfatica (lingua)**
- **infiltrazione perineurale (40%)**

**Tongue and Related Structures**  
Sagittal Section

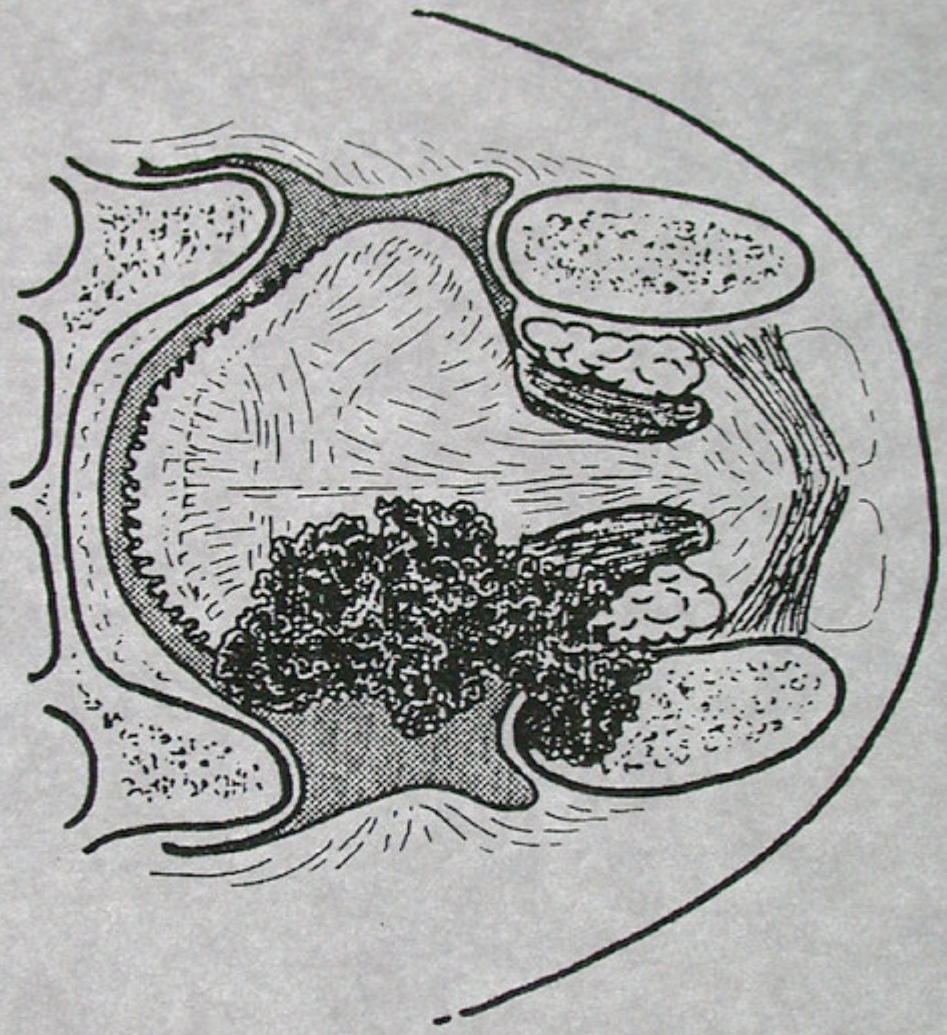


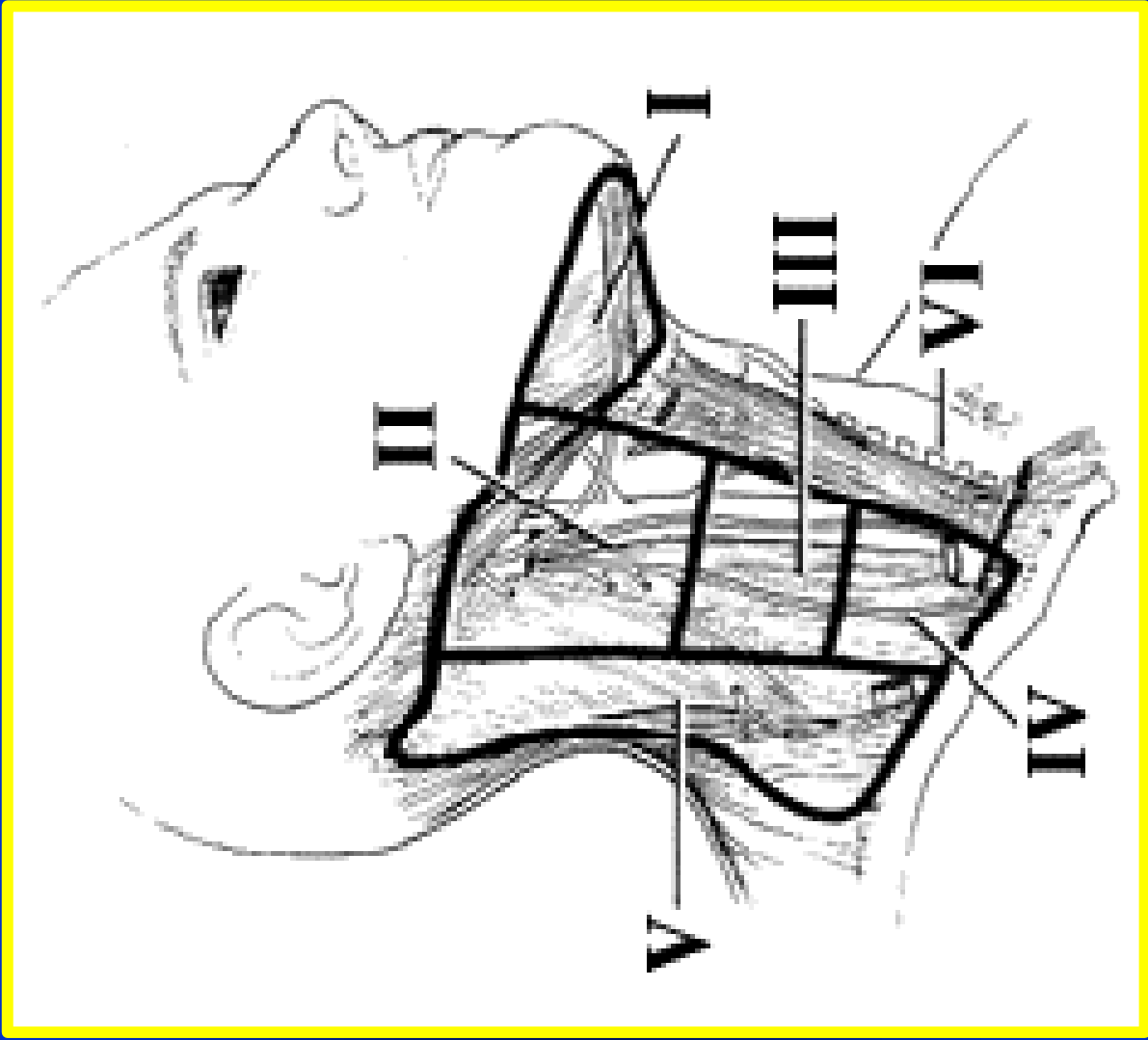
# **Carcinoma del cavo orale: storia naturale**

- mts linfonodali cervicali: 35-62%
- mts a distanza poco frequenti: 10-15%  
(polmone, fegato, ossee)
- frequente multifocalità (locale e VADS)

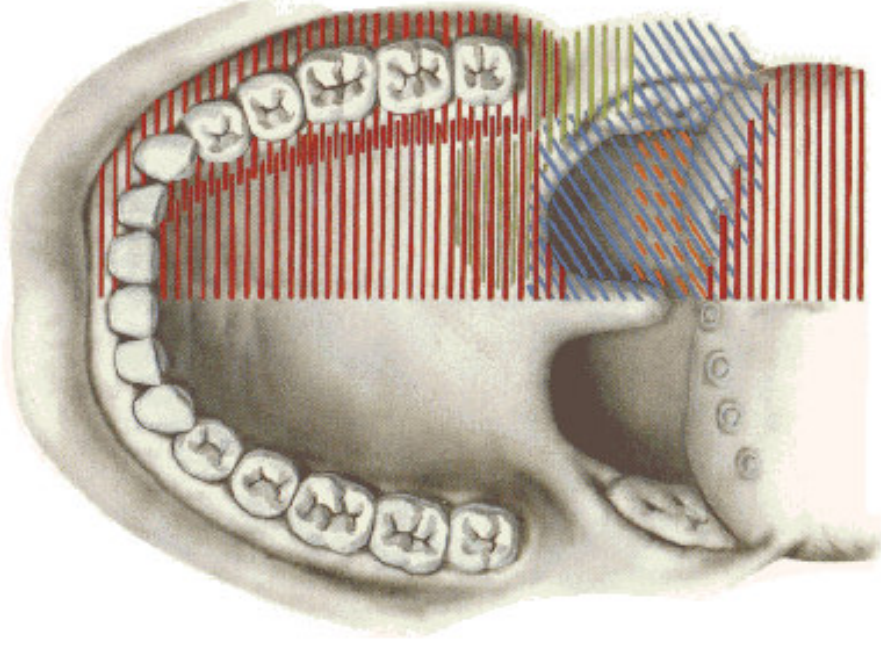
T4

pT4





**Afferent Innervation of Mouth and Pharynx**  
Anterior View

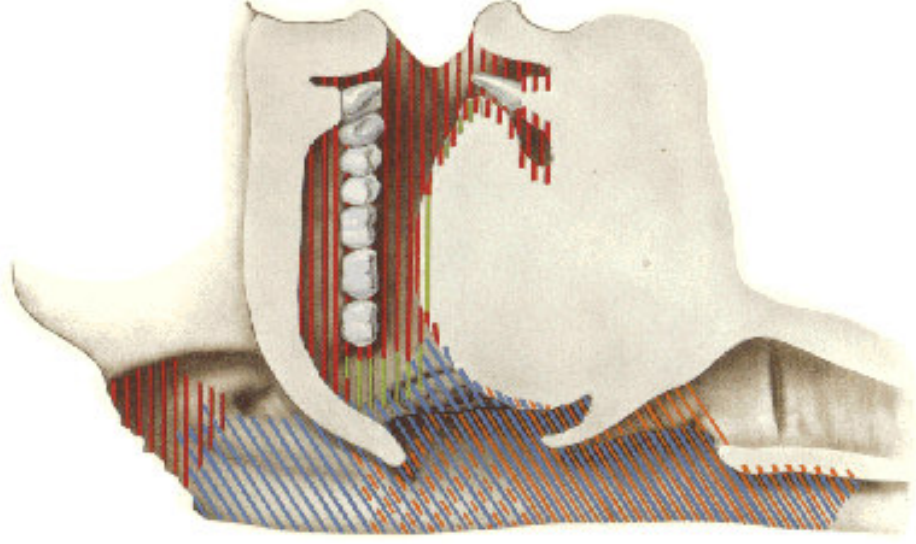


# **Carcinoma del cavo orale: storia naturale**

- mts linfonodali cervicali: 35-62%
- mts a distanza poco frequenti: 10-15%  
(polmone, fegato, ossee)
- frequente multifocalità (locale e VADS)

# Afferent Innervation of Mouth and Pharynx

Lateral View



## Nerves of Oral and Pharyngeal Regions

